

## CHAPTER 59

### Making "From Plain to Plane" Cold Process Soap



A few soap shavings from a bar of soap can be used to transform it from ordinary to extraordinary. Birds, moths, caterpillars, flowers, ribbons, bows, fish, message scrolls, and anything you can imagine can be added to a milled and beveled bar of freshly made soap. Here are just a few ideas to springboard your creativity. Plain soaps are used here, but any soap with any pattern could be used.

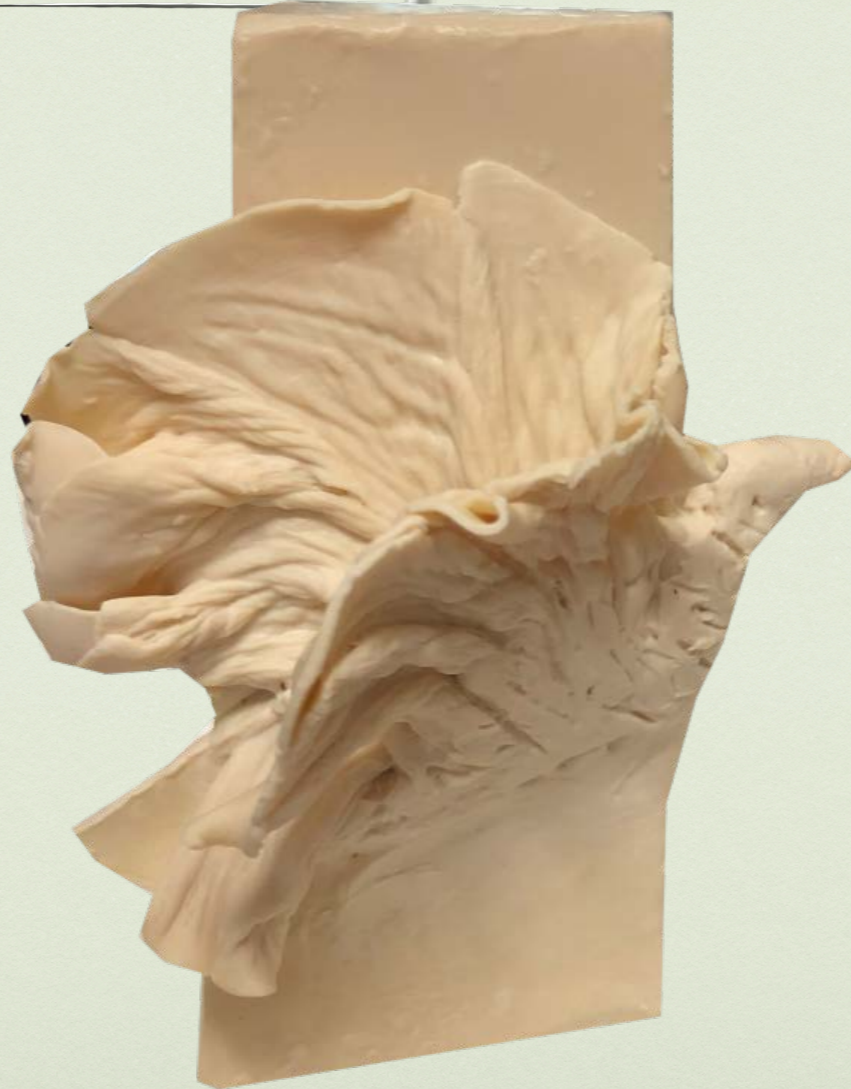


## Soap Ingredients :

1. 18 oz Organic Coconut Oil-76 deg
2. 18 oz Olive Oil
3. 15.15 oz of Refined Shea butter
4. 13.7 oz of Filtered water
5. 7.2 oz of Food Grade NaOH
6. Cotton ball size piece of Tussah silk



Shavings make good petals for flowers.



Shavings make good bird, butterfly or moth wings.



Shavings can be used to make scrolls on which you can inscribe a personal message.



## THE COLORS

1. 3 TBS Titanium dioxide



Shavings make good fish fins.

## THE FRAGRANCE

1. 0.5 oz Jojoba oil added after trace
2. 0.85 oz Bergamot Essential oil + 1.15 oz Organic Lemon Essential oil + 1.05 oz Lime Essential oil.

## • SETUP AND SUPPLIES •



## SUPPLIES :

There are no new supplies for this soap.



**Right click the image to open and watch the video**

**Making "From Plain to Plane" Cold Process Soap**



**Right click a link below to open in a new tab or window:**

**[Go to My Free E-Book](#)**

**[Go to my Website Homepage](#)**

**[Bible Bite for this chapter: John Chapter 18:1-5](#)**